



بلاستيكو لصناعة البلاستيك ذ.م.م

PLASTELLO PLASTIC INDUSTRY LLC



ECO-friendly



Weather Resistant



Durable



UV Resistant

+971 54 7052060 +971 54 7052061 sales@plastello.com info@plastello.com  
Plot 0511, Sector 5, Area 1, Umm Al Thoub, Umm Al Quwain - UAE

## About Us

**Plastello Industries LLC is one of the prominent and accomplished company who excels in designing and manufacturing of moulded polyethylene tanks for commercial, residential and industrial use.**

**Our team of highly qualified professionals and trained employees works with utmost dedication in rendering their services to the customer. We leverage our specialized and innovative skills to add to the greatest value for our customers. We pursue a well-defined quality management system that involves proper check of raw material, processing techniques and final testing. Each product is extensively tested for density, strength and durability.**

**Plastello tanks have several advantages over the traditional steel tanks. Our seamless construction provides them with greater impact strength and superior resistance to rust, corrosion and fuel additives. These virtually indestructible tanks have a longer lifespan than steel tanks, which cannot fracture and leak. Plastic tanks can easily be moulded to fit tank compartments, unlike metal tanks, and are simple to install. This characteristic provides savings in size, weight and cost. Plastic tanks also cost less overall than steel tanks.**

## Vision

**To achieve highest level of customer satisfaction and market leadership by providing high quality and environment friendly products at better price.**

## Mission

**To produce technically most advanced plastic products through high level of man, machine and technology integration, thereby serving the customer with high quality, long lasting products.**



# Vertical Water Tanks



## PLASTELLO PLASTIC INDUSTRY LLC.

### VERTICAL TANKS DIMENSIONS & RANGE.

CODE NO	USGALLON	IMP GAIION	DIAMETER (mm)	HEIGHT(mm)	MANHOLE SIZE (mm)	AVERAGE THICKNESS	
						3 Layers Standard	4 Layers Insulated.
PPI-V 3.5	35	29	555	685	370	3	4
PPI-V 5.0	50	41	565	700	370	4	4
PPI-V 10	100	83	750	850	480	4	5.5
PPI-V 20	200	166	970	1100	480	4	6
PPI-V 30	300	250	1120	1275	480	4.5	6.5
PPI-V 40	400	334	1250	1350	480	5.5	7
PPI-V 50	500	416	1330	1530	480	6	8
PPI-V 60	600	499	1350	1650	480	6	8.5
PPI-V 80	800	666	1530	1790	520	7.5	9
PPI-V 100	1000	833	1650	1800	520	8	10
PPI-V 120	1200	1000	1740	2040	520	8	10.5
PPI-V 125	1250	1040	1750	2040	520	8.5	11
PPI-V 150	1500	1250	1850	2050	520	9.5	10.5
PPI-V 200	2000	1667	2050	2300	520	10	12
PPI-V 300	3000	2500	2340	2740	520	13	16
PPI-V 500	5000	4166	2700	3400	520	20	25
PPI-V 750	7500	6250	3025	4350	520	22	26

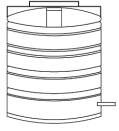
# Horizontal Water Tanks



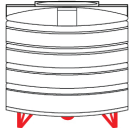
## PLASTELLO PLASTIC INDUSTRY LLC

### HORIZONTAL TANK DIMENSIONS

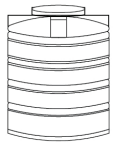
U.S GALLONS	IMP. GALLONS	LITRES	DIAMETER (MM)	LENGTH (MM)	HEIGHT (MM)	MANHOLE (MM)	AVERAGE THICKNESS	NO OF LEGS
35	29	133	550	730	580	250	4 mm	2
50	42	189	650	800	660	250	4 mm	2
100	83	378	800	1060	850	350	5 mm	3
150	125	568	630	1160	960	350	5 mm	3
200	166	757	980	1330	1020	350	5.5 mm	3
300	250	1135	1100	1500	1160	350	6 mm	3
400	333	1514	1200	1650	1290	460	7 mm	3
500	416	1893	1300	1780	1370	460	7.5 mm	3
600	500	2271	1390	1930	1420	460	8 mm	4
800	666	3028	1520	2050	1510	460	9 mm	4
1000	833	3785	1650	2240	1680	460	10 mm	4



Keep tank fittings gripped by pipe Wrench white connecting to main line.



Keep tank on even platform and properly balanced.



Keep tank cover always closed tightly.

The Tank should be suitably anchored where required

The Tank should not be installed closer to heaters or other direct sources of heat. No pipe fittings should be fixed at the bottom of the tank under any circumstance. Do not use the tank for storage of any chemicals prior to consultation with Plastello Industries.

## Layers

Plastello tanks are made out of top quality polyethylene material sourced from SABIC, SCG Thailand & India. Polyethylene is extremely resistant to chemicals and different types of salt additives. Moreover our tanks are in total compliance with the highest specified standards for international quality.

Plastello tanks are strong, portable and lightweight. They provide safe storage of water and chemicals and can be stored above or below the ground. Our tanks are available in double layers, triple layers and insulated foam layers with inner smooth black layer.

### 1. First Layer (External White Layer):

Made out of approved UV stabilized Polyethylene the white layer is dust-proof and obstructs the harmful effects of UV rays cause material degradation.

### 2. Second layer (Polyethylene Black color):

Works same as the first layer to be suitable for the storage of Potable Water.

### 3. Third Layer (Foam Layer):

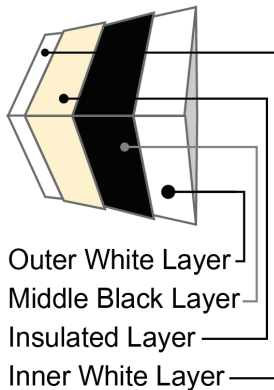
This layer provide the tank the following values:

- Thermal insulation
- Improving stiffness
- Prevent formation of Fungus
- Prevent the bacterial growth

. In addition to UV stabilizer added to the raw material, the black color is naturally acts as an additional UV Stabilizer and naturally food grad color.

### 4. Fourth Layer (Inner White):

This smooth pure-white layer prevents build-up of impurities and bacterial growth in the inner surface of the tank. The inner white layer is anti-corrosive and retains the purity of water. In addition makes the water safe for consumption



Outer White Layer  
Middle Black Layer  
Insulated Layer  
Inner White Layer

## Warranty

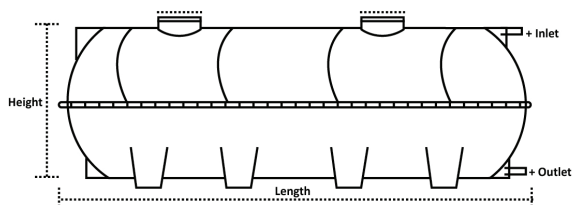
Plastello manufacture the top-grade tanks with the highest quality fittings and are designed to last. With our wide range of best quality tanks, cost-effective pricing and excellence in after-sales & service, Plastello tanks are the most sought after storage products in the region.

Our innovative range of horizontal and vertical polyethylene water tanks are further backed by 3 year warranty. A warranty you can trust!

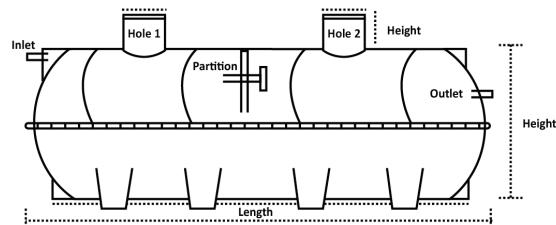
At Plastello, we look forward to helping you invest in the right choice of water tank for your varied needs.

# Drawing

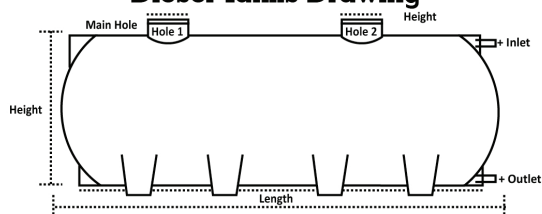
## Water Tanks Drawing



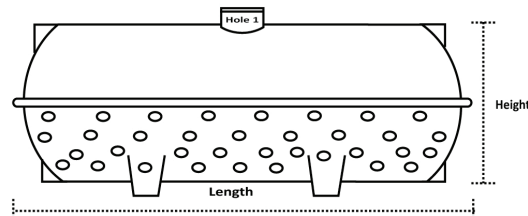
## Septic Tanks Drawing



## Diesel Tanks Drawing



## Soak-Away Tanks Drawing



## GRP Horizontal Tank

### GRP Horizontal Tanks

Capacity	Dimension on cm		
Gallon	Length	Width	Height
500	185	130	135
800	205	160	165
1000	235	160	165
1500	305	175	175
2000	260	185	190
2500	325	235	240
3000	340	235	240
5000	540	240	245
10000	640	305	310
15000	960	305	310
20000	1250	305	310
25000	1560	305	315



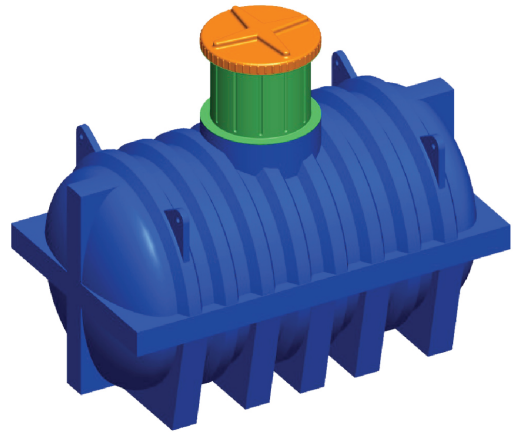
## GRP Vertical Tanks

### GRP Vertical Tanks

Gallon	Liter	M <sup>3</sup>	DIA/cm	Height/cm
5000	18927.1	19.00	300	320
10000	37854.2	38.00	300	550



**Panel Tank**



**Septic Tank**



**Road Barrier**



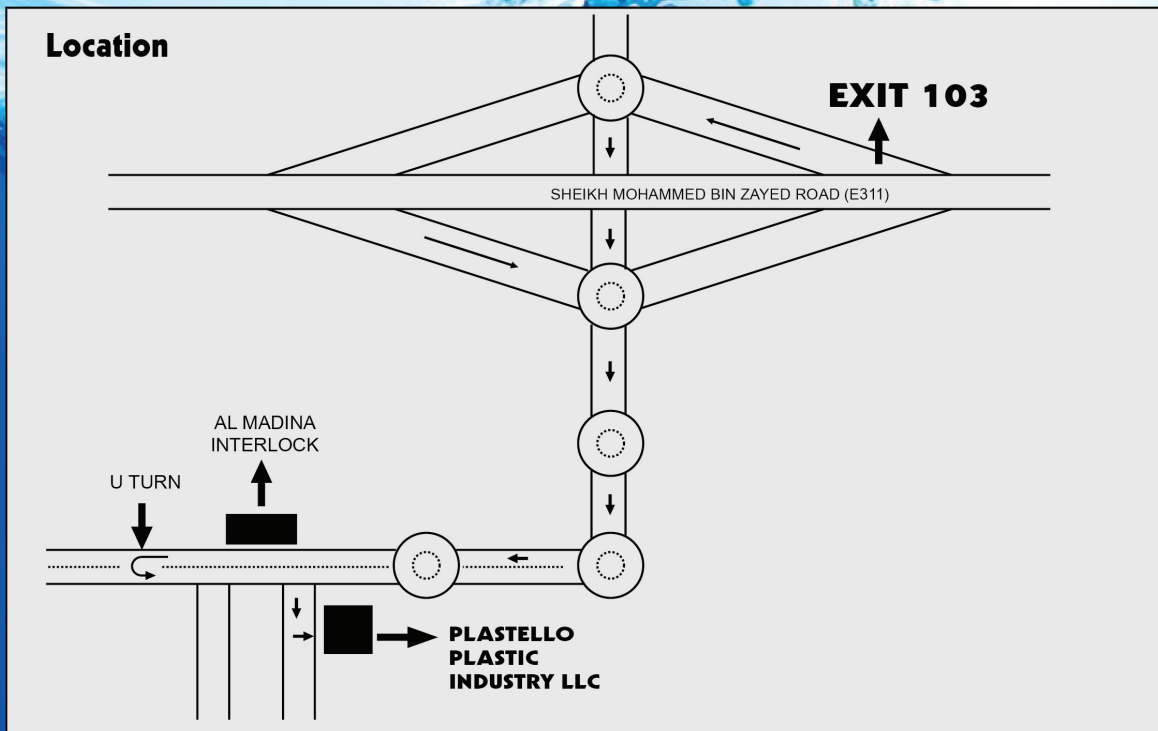
**Traffic Cones**



**Tank Connectors**



**Brass Fittings**



+971 54 7052060 +971 54 7052061 sales@plastello.com info@plastello.com  
Plot 0511, Sector 5, Area 1, Umm Al Thoub, Umm Al Quwain - UAE